

PART OF THE SW.1/4, OF SECTION 3, T.5N., R.2W., S.L.B. & M.

714

SALT POINT WEST SUBDIVISION

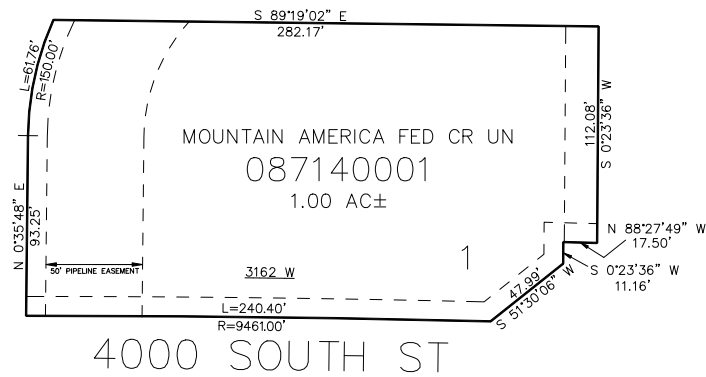
IN WEST HAVEN CITY

TAXING UNIT: 215

SCALE 1" = 50'

SEE PAGE 29

SEE PAGE 29



SEE PAGE 29

SEE PAGE 29

10' UTILITY & DRAINAGE EASEMENTS EACH
SIDE OF PROPERTY LINES AS INDICATED
BY DASHED LINES EXCEPT AS OTHERWISE
SHOWN.

FOR COMPLETE SURVEY DATA SEE
ORIGINAL DEDICATION PLAT IN
BOOK 97, PAGE 59 OF RECORDS.